



Technology Enhanced Early Literacy Assessment Series (TE EL)

Galileo® K-12 Online from Assessment Technology Incorporated (ATI) offers the Technology Enhanced Early Literacy Assessment Series (TE EL). The TE EL are online assessments aligned to Common Core and local state early-elementary (i.e. kindergarten and first grade) literacy standards. ATI's TE EL utilizes technology enhanced (TE) items including sound and images to assess students in a friendly, early-elementary environment. The interactive TE EL assessments may be used to inform intervention planning to ensure students are progressing in the development of their literacy knowledge and skills.

What is the TE EL?

The TE EL consists of four computer-presented assessments aligned to Common Core and local state early-elementary standards per grade level for kindergarten and first grade. The progressively comprehensive assessments are designed to assess the development of early literacy skills throughout the year. ATI recommends administering the assessments at the beginning of the school year, in late fall, winter, and spring assessment administration. Some of the areas assessed by the TE EL include:

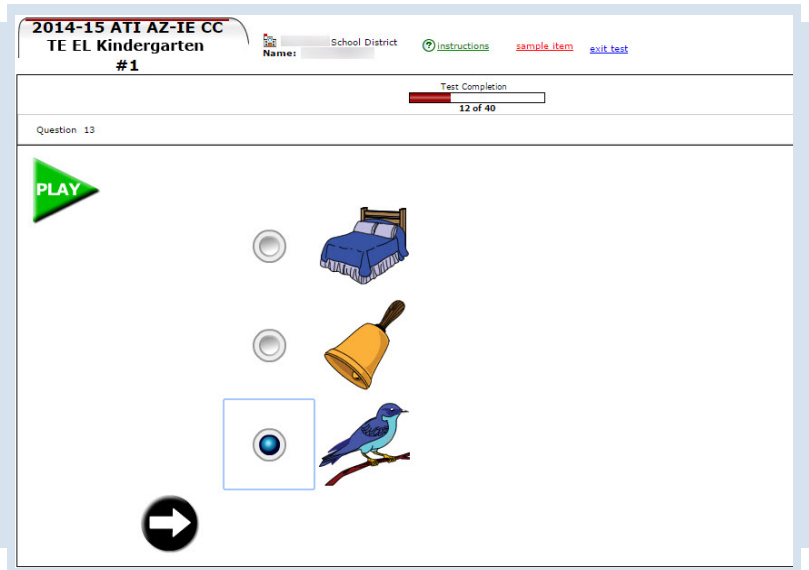
- print concepts
- phonological awareness
- phonics and word recognition
- vocabulary acquisition and use
- comprehension of text

Engaging, Self-Guided Assessment

Each assessment is administered online via a computer with audio capabilities (i.e., sound card and speakers/headphones). Students are presented with a demonstration including clear audio instructions on how to take the assessment. Additionally, the student is given the opportunity to practice before taking the assessment. The TE EL may be administered to a whole class or to an individual child as an independent activity with minimal supervision.

Benefits for Administering TE EL

- Supports districts in responding to national and state initiatives related to early literacy by providing assessment activities targeting critical early literacy skills.
- Presents TE EL results data which may be used to guide instruction and intervention planning.
- Provides ability to forecast student performance on the statewide reading assessment at the end of third grade.
- Streamlines and standardizes the assessment process.
- Scores and records student responses automatically.



TE EL assessments use TE items including sound and images to measure students' critical early literacy skills.

Contact ATI to learn more about TE EL and to schedule a Galileo Overview.