

# On-Site ATI Professional Development & Consultation Series

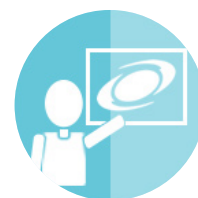
With Promotional Pricing



At ATI our mission is to create, distribute, and support technology to promote learning so that today's youth may meet the opportunities and challenges of tomorrow. As part of this mission ATI provides cutting-edge technology and guidance so that educators can benefit from all that Galileo® has to offer. As part of ATI's **new professional development on-site series**, ATI's experienced professional development team will work with your district or charter school to guide and support your educators in using Galileo® to create, evaluate, and modify educational goals.

## On-site Professional Development & Consultation Series

A customized professional development and consultation on-site series consists of 3 full day sessions and will be crafted to reflect your specific professional development needs.



The series includes:

- Getting New Teachers Ready for Using Galileo®
- Grouping Students for Differentiation and Intervention Purposes
- Utilizing Educational Resources Available in Galileo® Such as *Instructional Dialogs*, KHAN ACADEMY®, LearnZillion, and EngageNY
- Creating Formative Tests for Use in Classrooms and Interventions
- Creating District or School Item Banks
- Integrating Existing Curriculum Content into Galileo®, Developing New Curriculum Content, and Modifying Curriculums as Needed
- Aggregating, Disaggregating and Extracting Data for Progress Monitoring and for Reporting Purposes

Promotional pricing for the on-site professional development and consultation series.

### Promotion Terms

- Minimum purchase: 3 6-hour on-site sessions.
- Session dates confirmed with a Purchase Order for all 3 session dates.
- Invoices for each training session will be submitted 2 weeks prior to each training date. Payment terms are Net 30.

For more information, please contact our professional development team at [ProfessionalDevelopment@ati-online.com](mailto:ProfessionalDevelopment@ati-online.com)



creating technology to promote learning

Visit [ati-online.com](http://ati-online.com) to learn more or contact us:

1.877.442.5453 [GalileoInfo@ati-online.com](mailto:GalileoInfo@ati-online.com)

Find us:

[facebook.com/AssessmentTechnologyIncorporated](https://facebook.com/AssessmentTechnologyIncorporated)

[youtube.com/AssessmentTechnology](https://youtube.com/AssessmentTechnology)

[townhallblog.ati-online.com](http://townhallblog.ati-online.com)